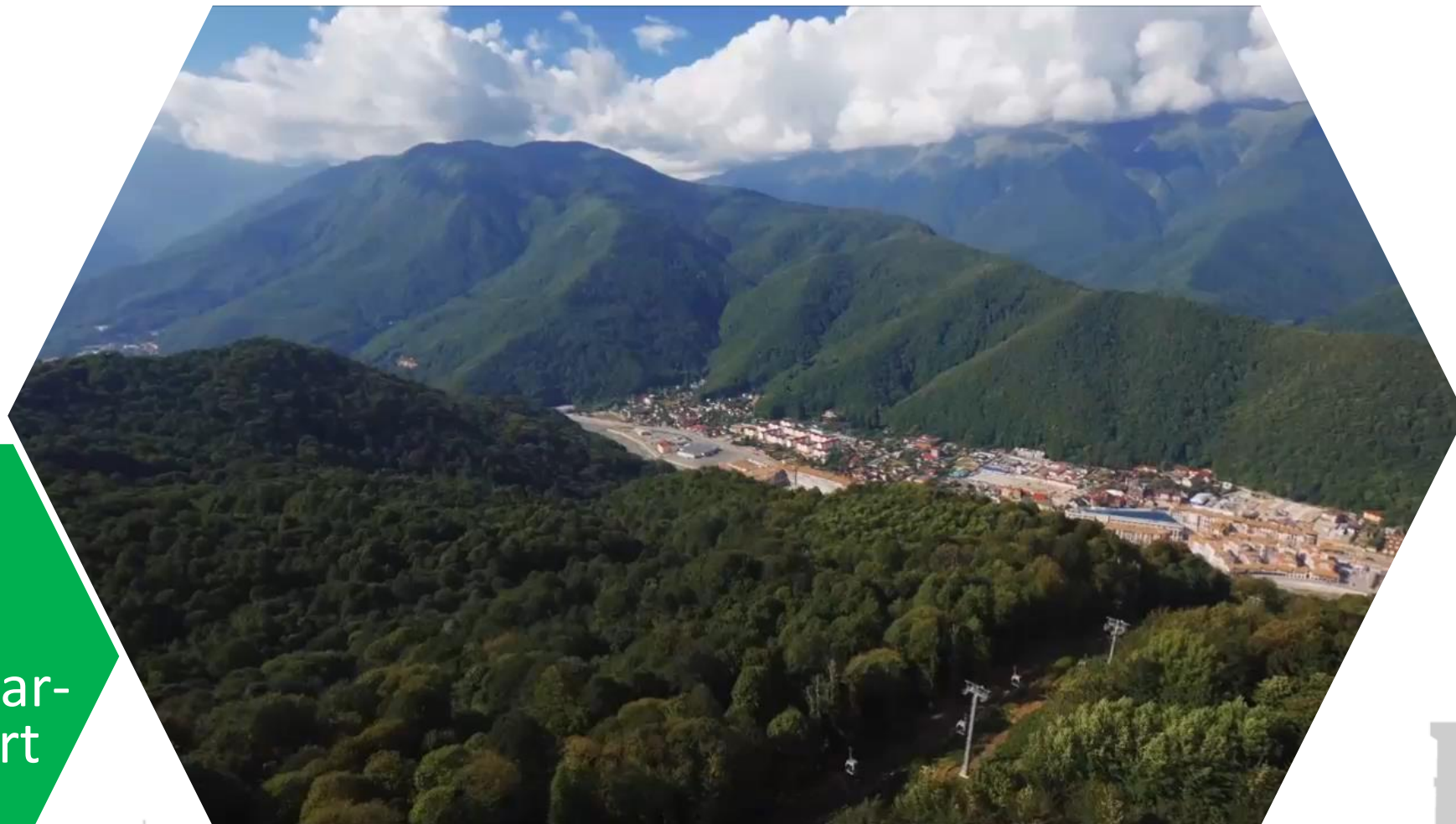




SOCHI OLYMPIC LEGACY







42 new hotels



200 thousand of guests
at the same time can
accommodate in the hotels of
Sochi city





3 million of tourists

took the mountain cluster for
the winter season 2015,
2016, 2017





Tourist flow:

2014 - **5,6** mln. people

2015 - **6,1** mln. people

2016 **6,5** mln. people





New roads and
road junctions





SOCHI -
center of the sea,
aviation and cruise
transportations





**SOCHI -
city without
barriers for
people with
limited mobility**





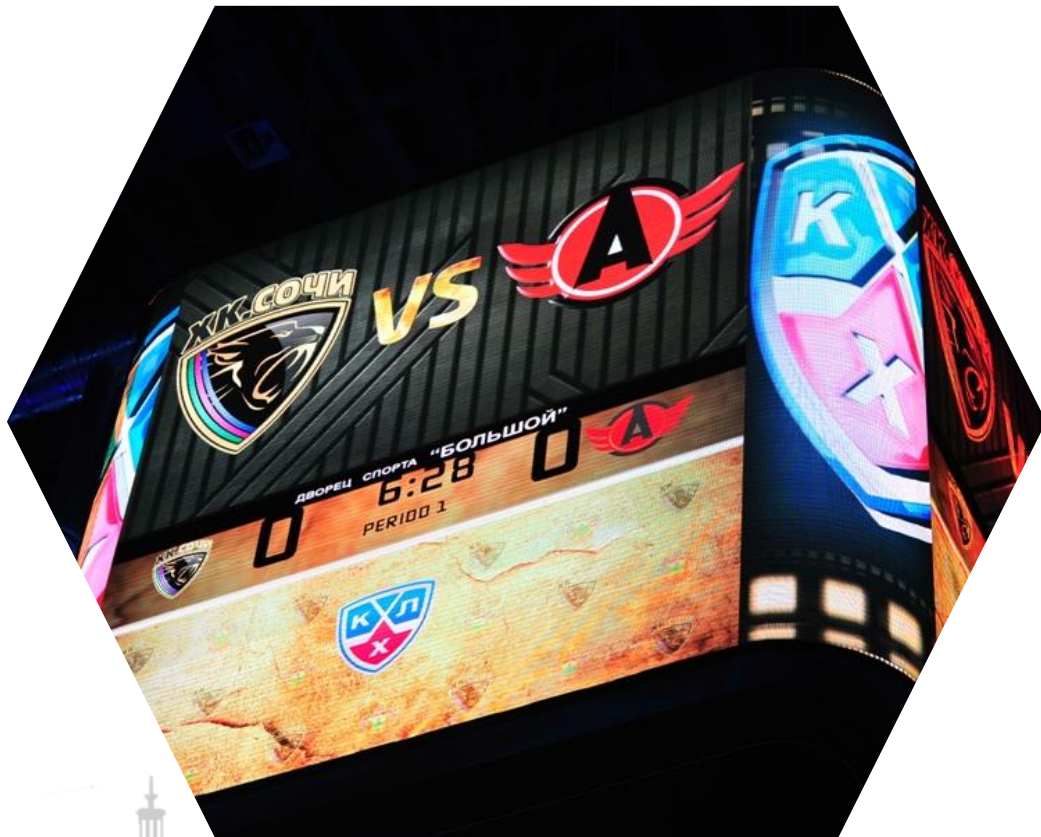


15
new
Sporting
venues



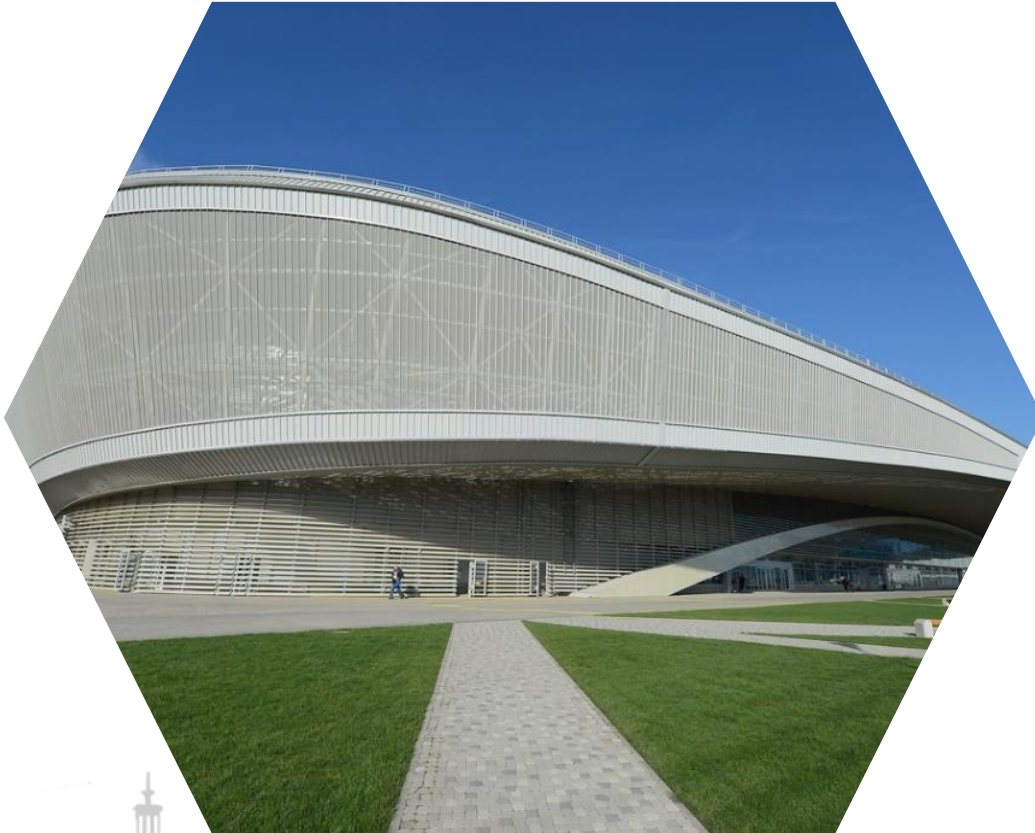


Ice Dome palace «Bolshoy»





Skating center "Adler-Arena"



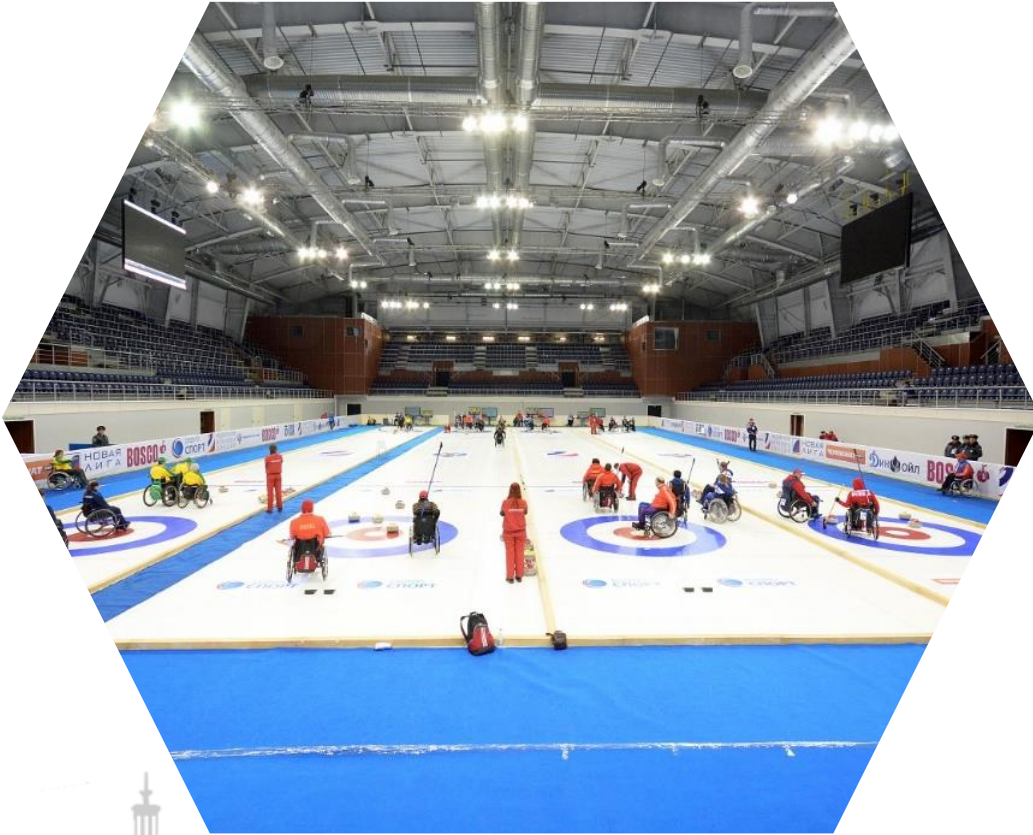


Ice arena "Puck"



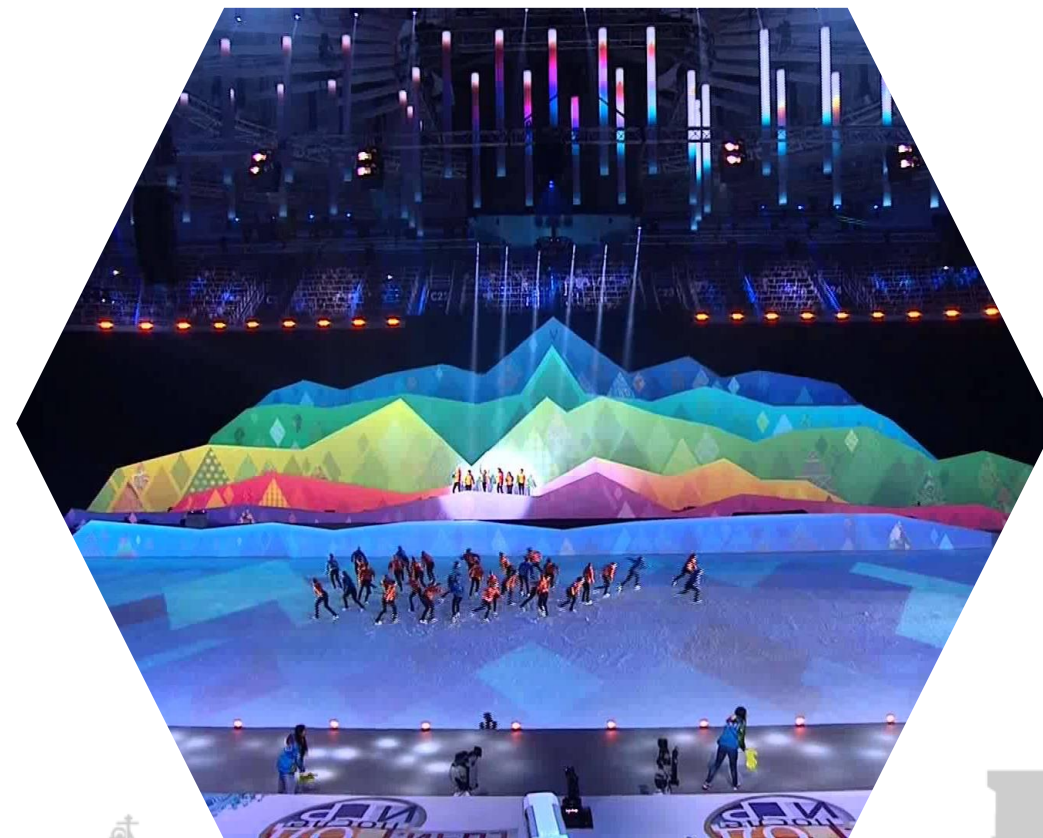


Curling Center «Ice Cube»





Winter Sport Palace «Iceberg»



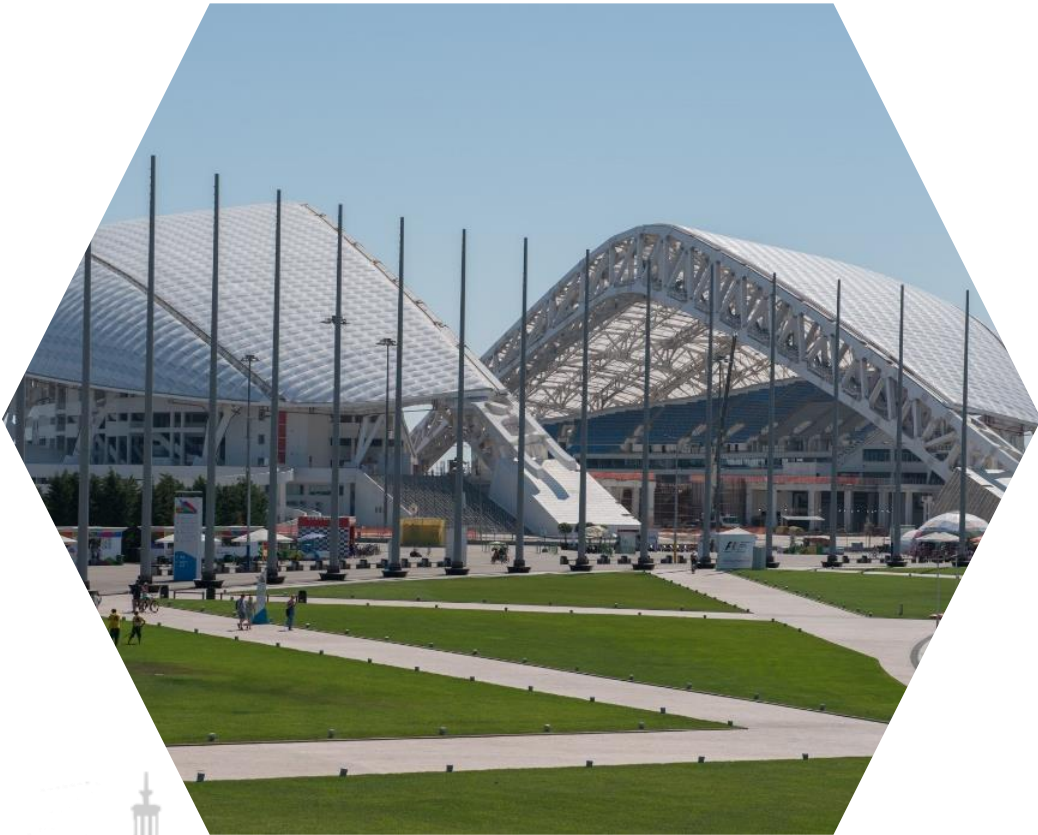


Park of entertainments «Sochi Park»





Stadium "Fisht"





Track Sochi Autodrome





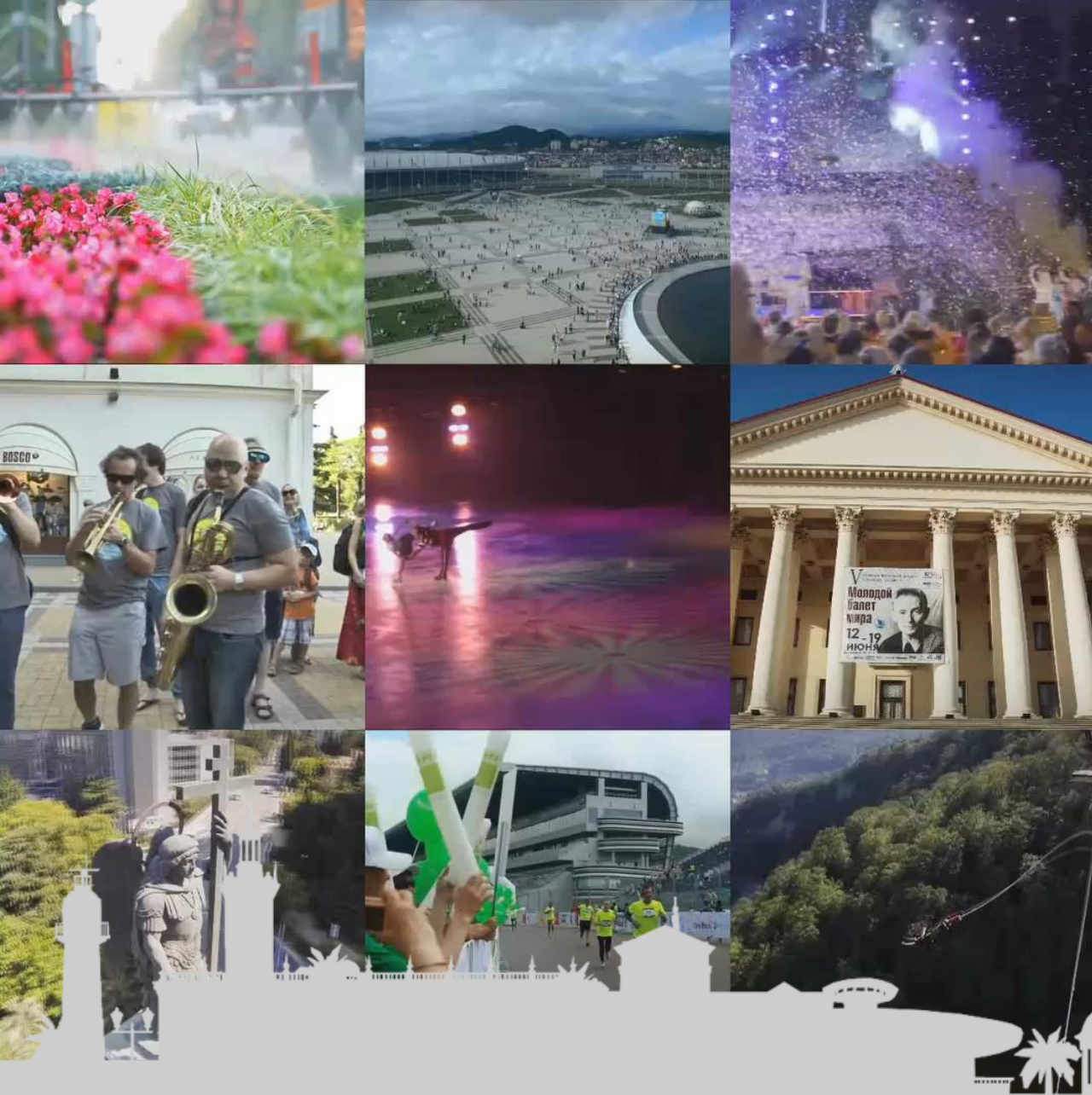
Volunteers





Russian International Olympic University





**Development of a new type of
tourism – EVENT tourism**



204
significant
events
in 2015





229
significant
events
in 2016





Thank you

